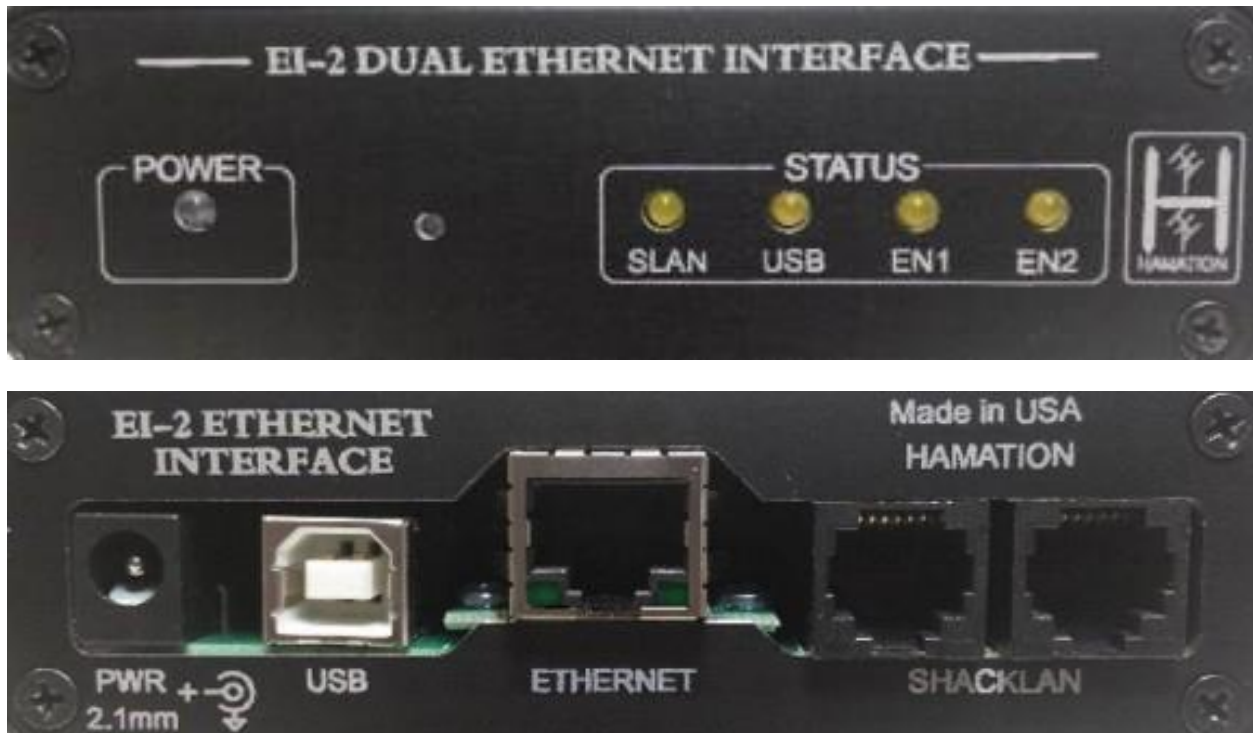


# EI-2 Ethernet Interface User's Manual

By [www.hamation.com](http://www.hamation.com)

The Hamation ShackLAN EI-2 Ethernet Interface provides two independent remote Ethernet connections to allow control of all ShackLAN devices. The remote connections may be operated in parallel with ShackLAN Control Center running on a local computer and connected to the USB connector. IP address and ports are fully configurable by the user.



Front and rear views of the EI-2

## Installation

### Power Connections

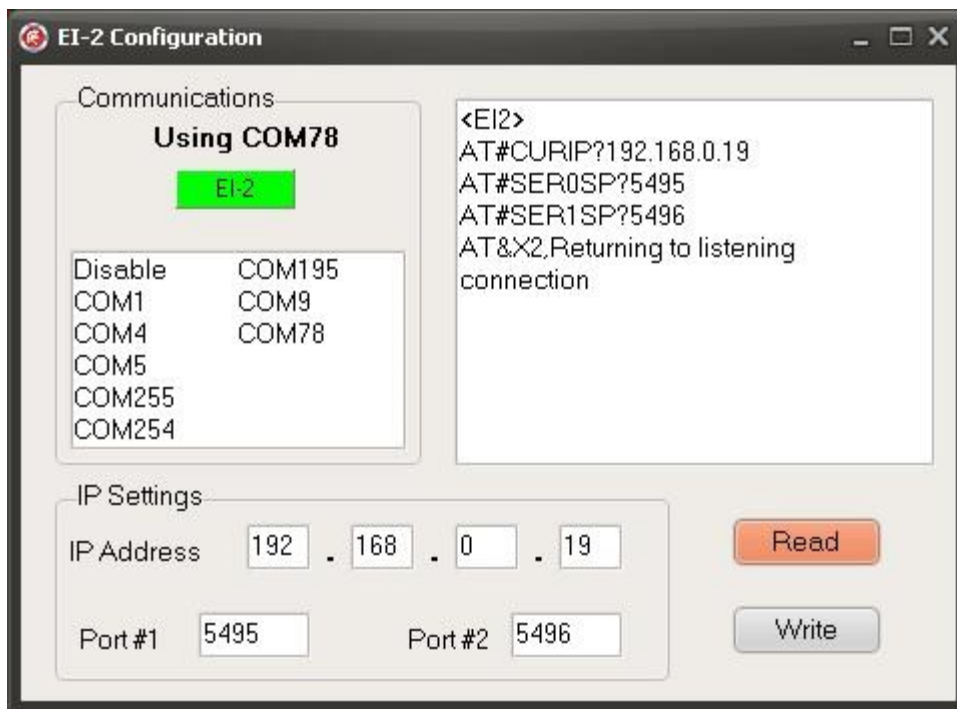
Connecting power to the EI-2 interface may be done by supplying 12 V DC to the power jack or from other ShackLAN devices via the ShackLAN NET connector. A power cable with a 2.1 mm coaxial connector is included to connect to your station power supply. **The white stripped wire is positive and the solid black wire is negative (ground).**

## Connecting to other ShackLan devices

The EI-2 interface may be connected to other Shacklan devices such as other controllers, band decoders, stack controllers, etc. Connection to other devices may be made using the ShackLAN RJ-12 (modular) jacks using 6-wire modular cables. The two ShackLAN jacks are in parallel and either or both may be used to connect to other devices.

## Configuration

All configuration of the EI-2 is done using the [EI2 Configuration software](http://www.hamation.com/Downloads/EI2Config.exe). Found on this link: <http://www.hamation.com/Downloads/EI2Config.exe> Download and run the configuration utility. The EI2 Configuration utility is a stand-alone application and no installation is required. Just run the EI2Configuration.exe application. **DO NOT connect a USB cable to the EI2 until the application is running.**



Start by selecting the COM port for the USB connection to the EI2. The proper port can be identified by unplugging the USB cable, waiting a few seconds and reconnecting the cable. The proper COM port will be the one just added to the list. Select this port and wait for the EI-2 indicator to turn green. When the indicator turns green you are ready to begin the configuration process.

Begin the configuration by clicking on the Read button to download the current settings. The default settings as shown in the above screenshot should appear. Make any desired changes to the IP address and port numbers. Click on the Write button to save any changes and click on the Read button to verify you changes. This completes the configuration process.

NOTE: The EI-2 interface operates as a server. This means it only listens for incoming connections and does not initiate any connections. As such there is no need to set any other network parameters such as a gateway or subnet mask.