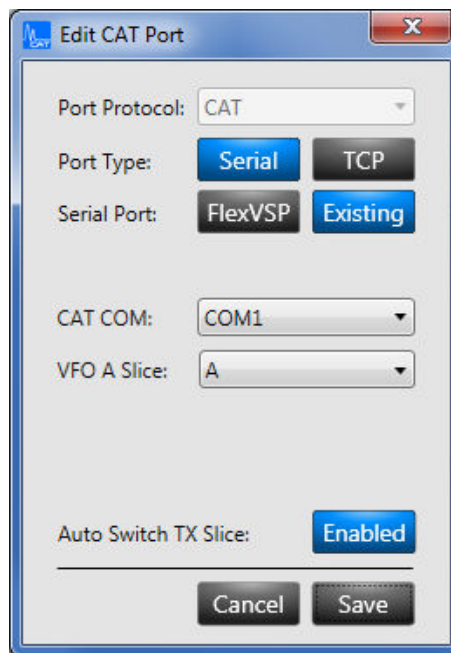
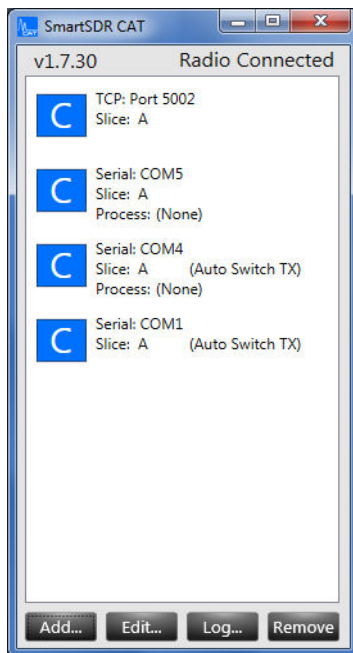


Controlling the OM Power amplifiers OM4000A / OM2500A with

Flex Radios Series 6xxx

Choose the control port in the SmartSDR window that you will use to control the power amplifier. It must be an existing serial port – a hardware COM port in your PC or an USB to serial port adapter-. Connect the chosen COM port and the transceiver port to the OM Power amplifier with a null modem serial cable (both ends of the cable with a female DB-9 connector and pins 2 and 3 are crossed).

Caution: You must use it for the TX slice that is associated to the connecting port otherwise the amplifier will not to be set on the proper frequency.



In the amplifier's SETtings menu select Flexradio, baud rate 9600 and press AUTO.

