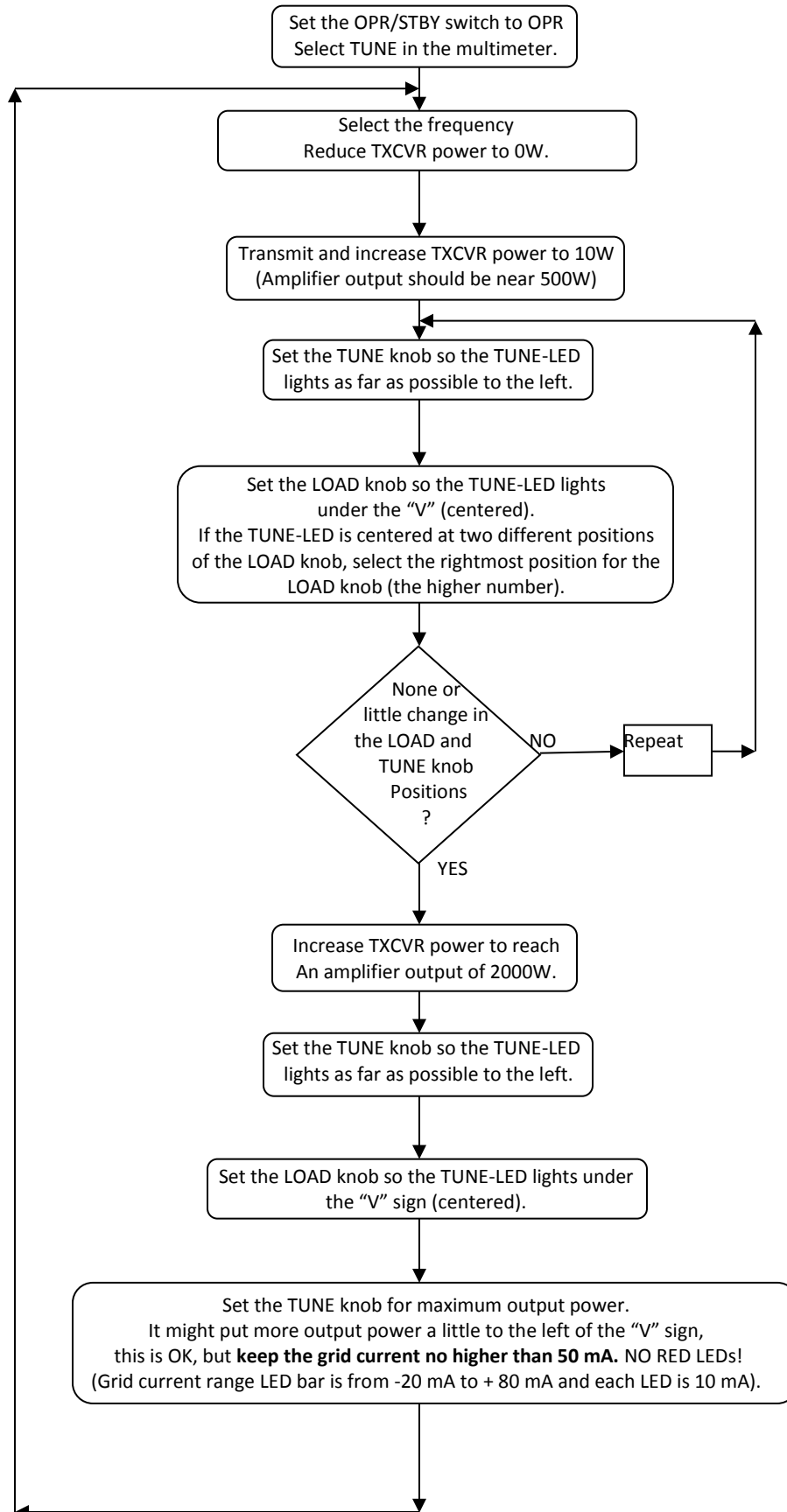


TUNING PROCEDURE FOR THE OM Power OM2500HF Amplifier.



TUNING PROCEDURE FOR THE OM Power OM2500HF Amplifier.

1-Set the OPR/STBY switch to OPR. Select TUNE in the multimeter.

2-Select the band and frequency. Reduce the transceiver power to 0W.

3-Transmit and increase the transceiver power to 10W. (Amplifier output should be near 500W).

4-Set the TUNE knob so the TUNE LED lights as far as possible to the left.

5-Set the LOAD knob so the TUNE LED lights under the "V" (centered). If the TUNE LED can be centered at two different LOAD knob positions, select the rightmost (higher number). If there is none or little change in the LOAD and TUNE positions, continue to step 6. Otherwise repeat step 4 until there is little or no change in the LOAD and TUNE knob positions.

6-Increase the transceiver power to reach an amplifier output of 2000 W.

7-Set the TUNE knob so the TUNE LED lights as far as possible to the left.

8-Set the LOAD knob so the TUNE LED lights under the "V" sign (centered).

9- Set the TUNE knob for maximum power output. It may be the case that the maximum power output is reached when the TUNE LED is a little to the left of the "V". This is OK, but keep the grid current no higher than 50 mA (preferably less if possible). NOTE: The grid current LED bar ranges from -20 mA to + 80 mA and each LED is an increment of 10 mA.