

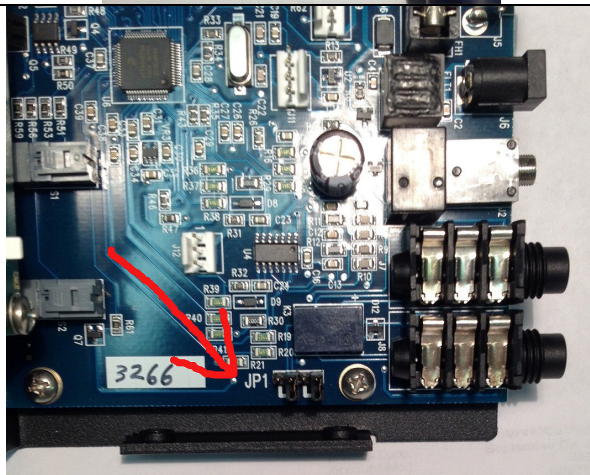
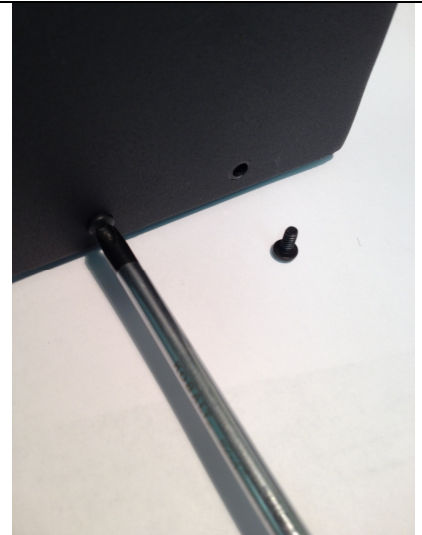
Array Solutions

Power Master II for SO2R

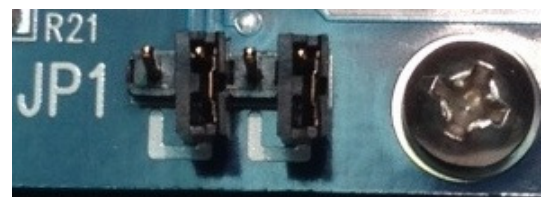
The Power Master II wattmeter has the ability to have two couplers connected to it, and it has provision to allow switching very easily between the two couplers through only two button presses on the front panel.

When operating SO2R, you do not want to have to toggle from one coupler to another. We make matched couplers available for SO2R users and due to the nature of these couplers being high impedance devices, we can actually connect the two coupler inputs in parallel and instead of toggling between the two couplers, they will both be connected and active at the same time.

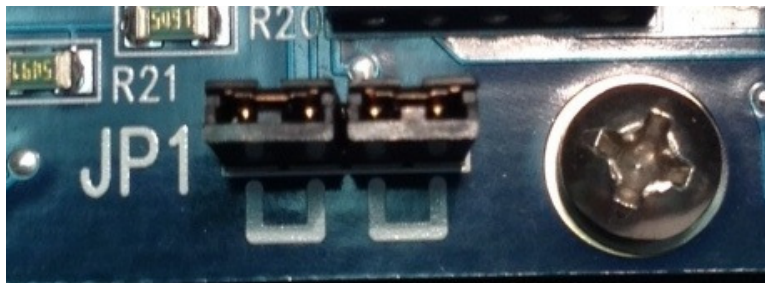
The first step is to disconnect all connections to the rear panel of your Power Master II and remove the two #6-32 philips screws on either side of the cabinet.



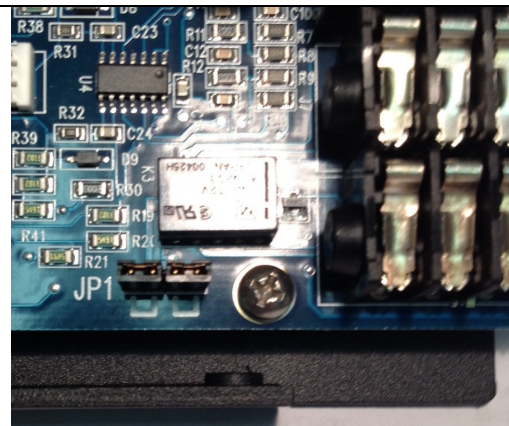
Then locate JP1 on the right side of the board.



JP1 is supplied with two “dip” jumpers as shown above.



Move the two jumpers so that they match the pattern above.



Finished!

After moving the jumpers as shown above, carefully place the cover back on the meter and reinstall the 4 screws (2 on either side).

At this point what you have done is connected the two coupler input jacks together as if they were one. So, we need to program the meter as if you only have one coupler – not two! This will allow you to transmit through either coupler and the meter will display that transmitter's output instantly without any switching. If you transmit on both at the same time, whichever one is at a higher power level will be shown.

See the Power Master II User's Manual for additional information.



Array Solutions
2611 N Belt Line Road
Suite # 109
Sunnyvale, TX. 75182
Phone 214.954.7140 Fax 214.954.7142

E-mail: sales@arraysolutions.com