

PRO.SIS.TEL.

*C.da Conghia 298
70043 Monopoli BA*

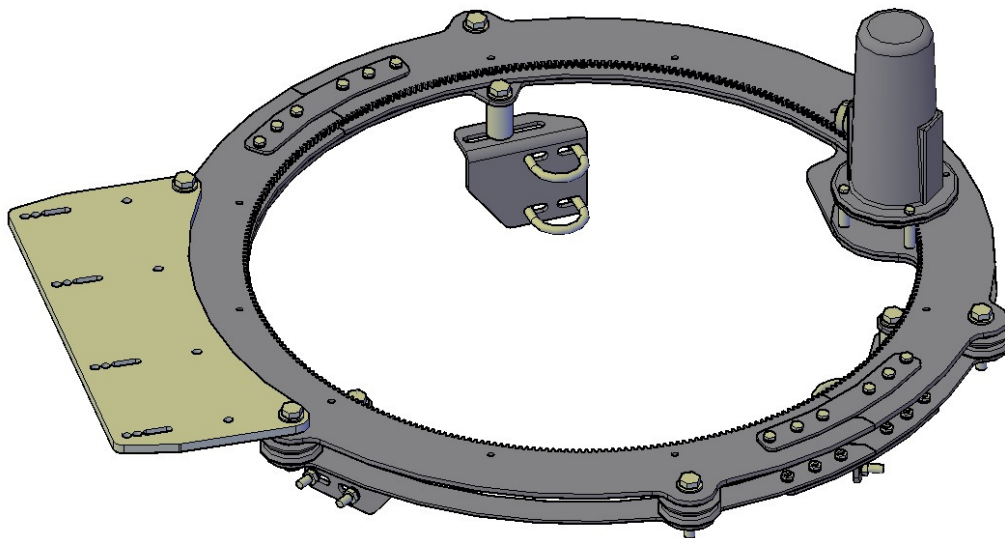
ITALY

Tel/fax+39 080 8876607

www.prosistel.it

prosistel@prosistel.it

Ring Rotor PSTRR55 User manual, installation and maintenance instructions.



PRO.SIS.TEL. C.da Conghia 298 70043 Monopoli BA	<i>PST-RR55 user manual.</i>	<i>2/9</i>
--	-------------------------------------	-------------------

Premise:

The rotator, before packaging, has been tested so it has no defects.

The correct application of following instructions will consent you to install and use the ring rotator system without risks.

During installation, it's better if someone else helps you. Act carefully, use adequate tools, respect safety rules. If you're incertain or have doubts, take contact with our technical office.

No claims, neither civil nor penal responsibility will be accepted for wrong/lacking application or misunderstanding of instructions written in this manual.

Remember that set up is an operation made by the customer who is the only one responsible of correct execution. If necessary, the installation will be done by specialized personnel.

For any legal controversy, the Monopoli (Ba) court will be cognisant.

Attention: any unauthorised technical modify applied to the system, will decline any warranty. If such unauthorised modifies will compromise Company reputation, we reserve the right to procede legally in Our defense.

Features:

- Maximum tower face width 50 cm (19.7")
- Maximum leg diameter 40 mm (1.575")
- Maximum boom diameter 90 mm (3.54")
- Minimum boom diameter 50 mm (1.97")
- Drive motor 24 VDC
- Gear ratio 26.6/1
- Position reading encoder
- Ring stall torque 558 Nm (411.559 lb-ft)
- Brake torque 1600 Nm (1,180.1 lb-ft)
- High temperature operation + 60 °C (140 F)
- Low temperature operation - 20 °C (-4 F)
- Standard finishing stainless steel
- Weight 25 kg (55 lbs)
- Inside diameter 575 mm (22.64")

Material AISI304 stainless steel:

Normal elasticity factor

Termic expansion factor

Exasperation tension

Breaking tension

Treatment

E = 196000 N/mm²

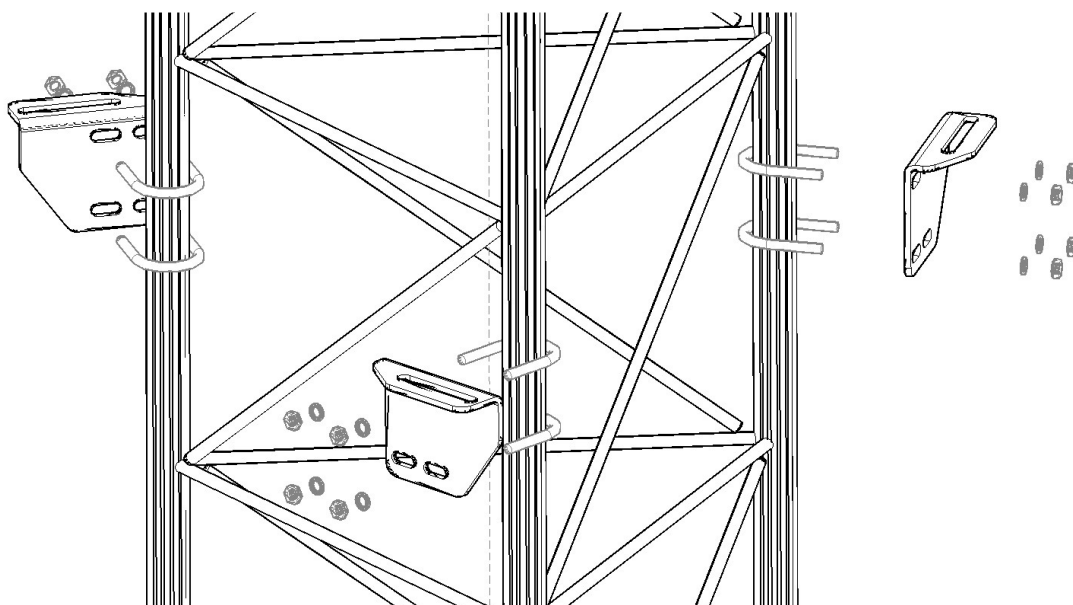
α = 0.0103 mm/m /°C

f_y = 540 N/mm²

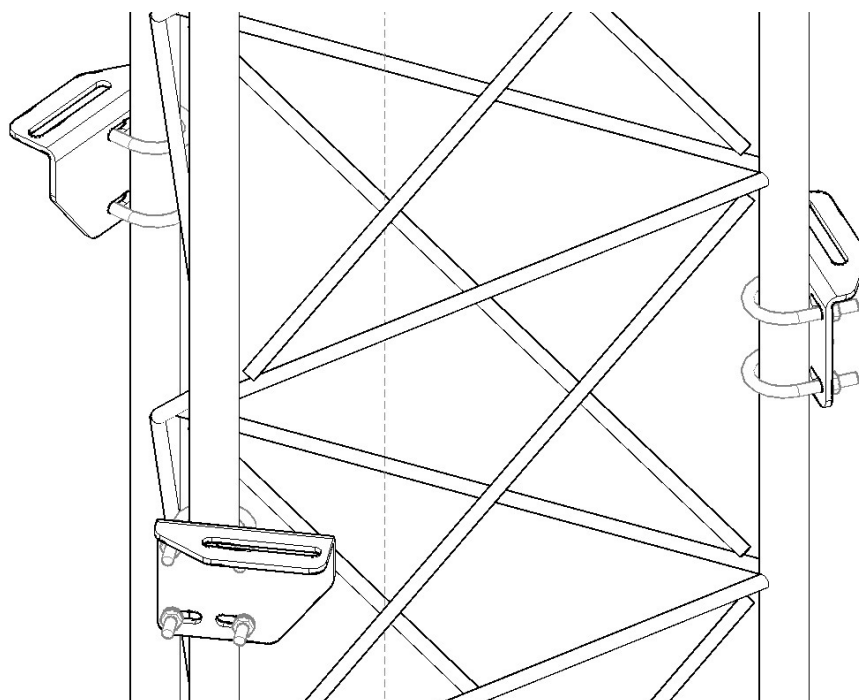
f_t = 750 N/mm²

polishing

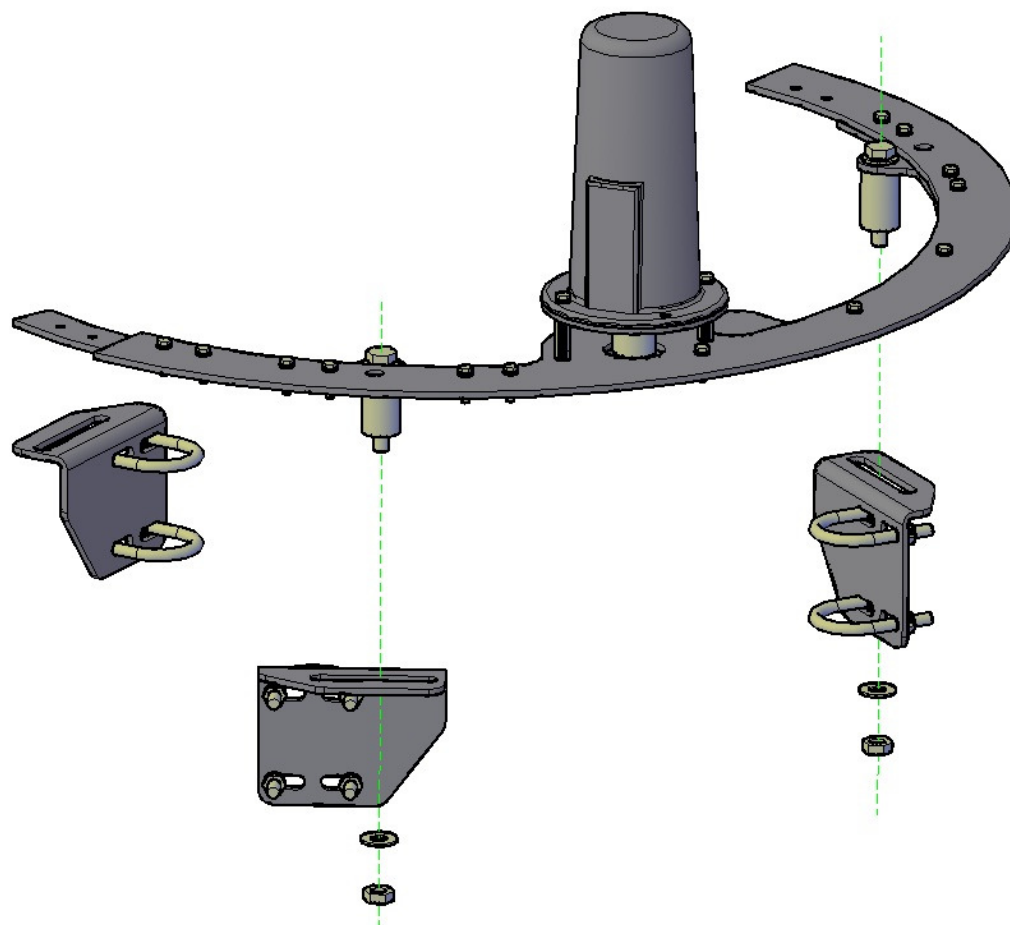
1 – Put in place the ring supports on tower legs, do not tight them strongly.



- U bolts x 6 pcs
- Ring supports x 3 pcs
- Split washer $\varnothing 8\text{mm}$ x 12 pcs
- Nut M8 x 12 pcs

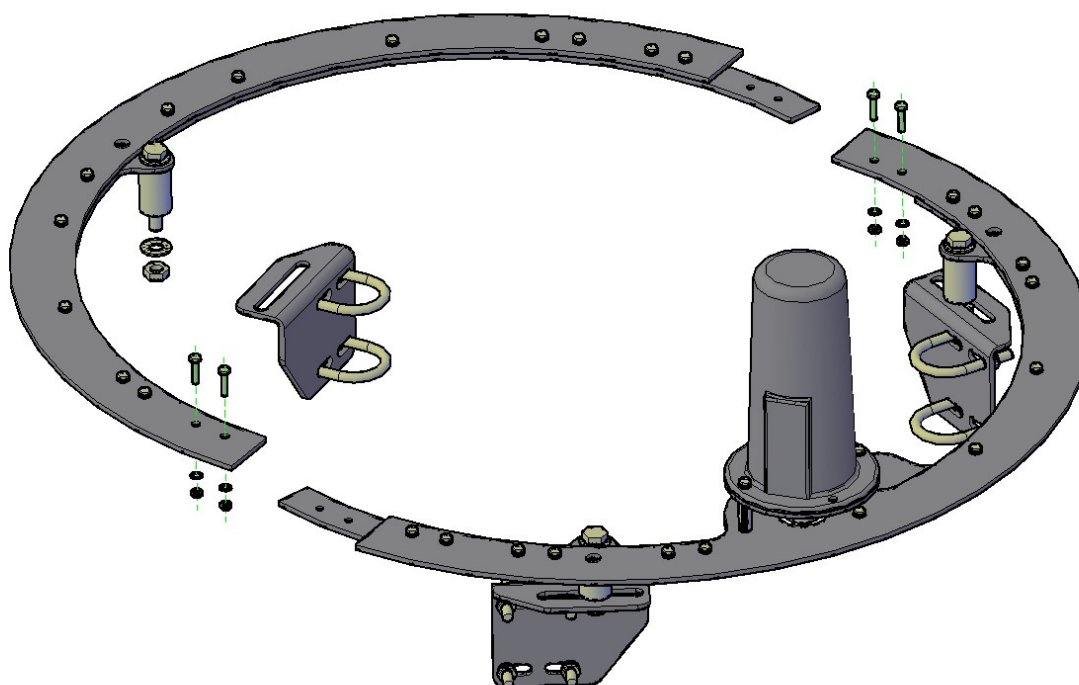


2 – Half central ring on spacers.



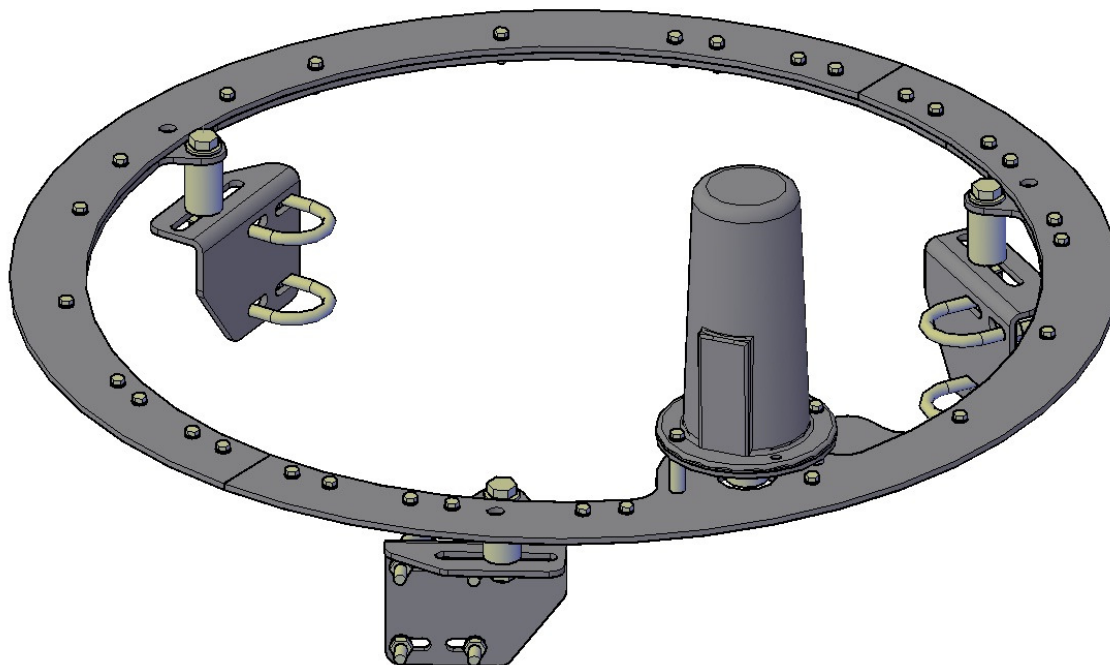
- Washer $\varnothing 10\text{mm}$ x 2 pcs
- Self locking nut M10 x 2 pcs

3 – Complete central ring.

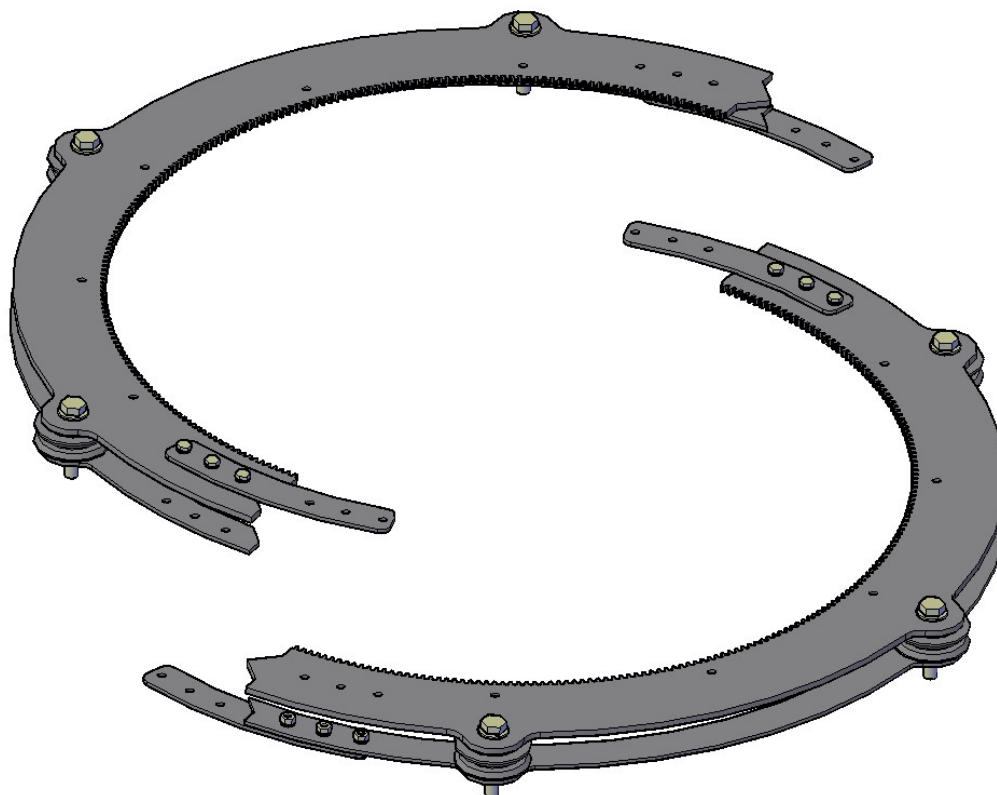


- | | |
|---|---------|
| • M5x20mm bolts | x 4 pcs |
| • Flat washers $\varnothing 5\text{mm}$ | x 4 pcs |
| • Washer $\varnothing 10\text{mm}$ | x 1 pc |
| • Self locking nut M10 | x 1 pc |

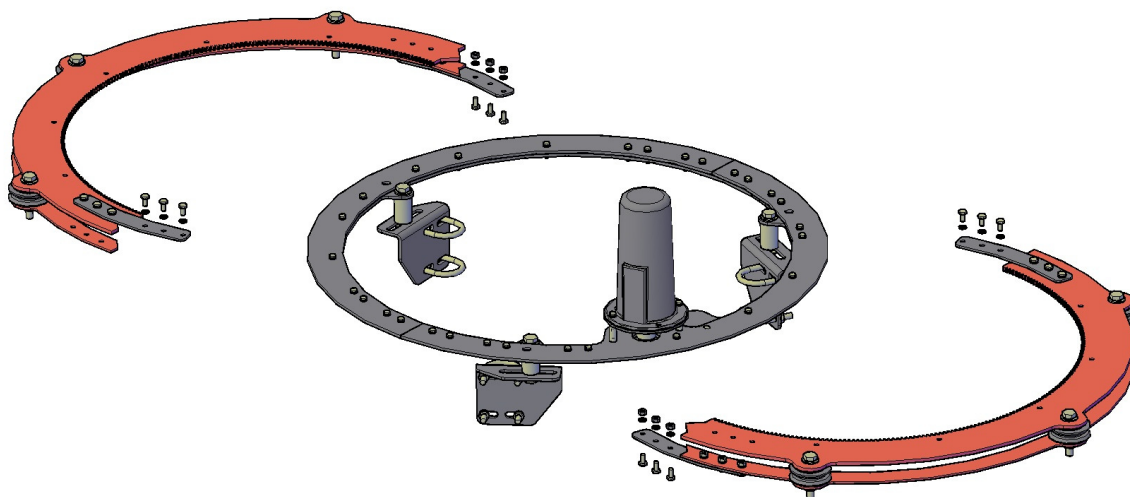
4 – Main ring ready, now tighten bolts.



5 – Assembling of rotating rings.



6 – Join ring parts.

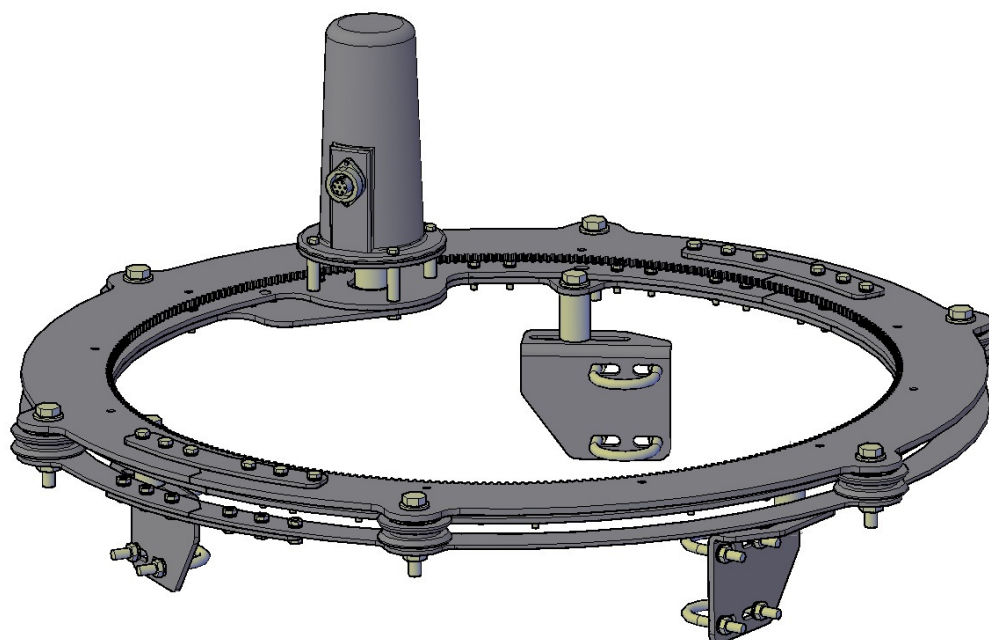


Upper geared ring (put some loctite on threads):

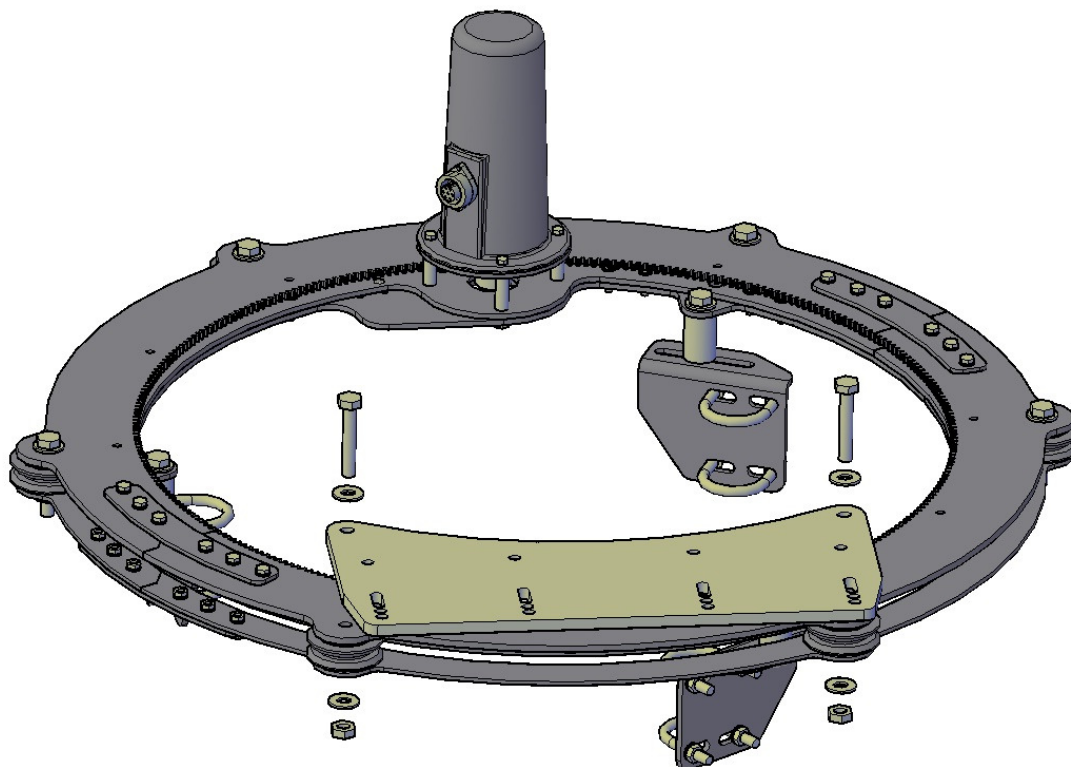
- M6x16mm bolts x 6 pcs
- Split washers $\varnothing 6\text{mm}$ x 6 pcs

Lower ring:

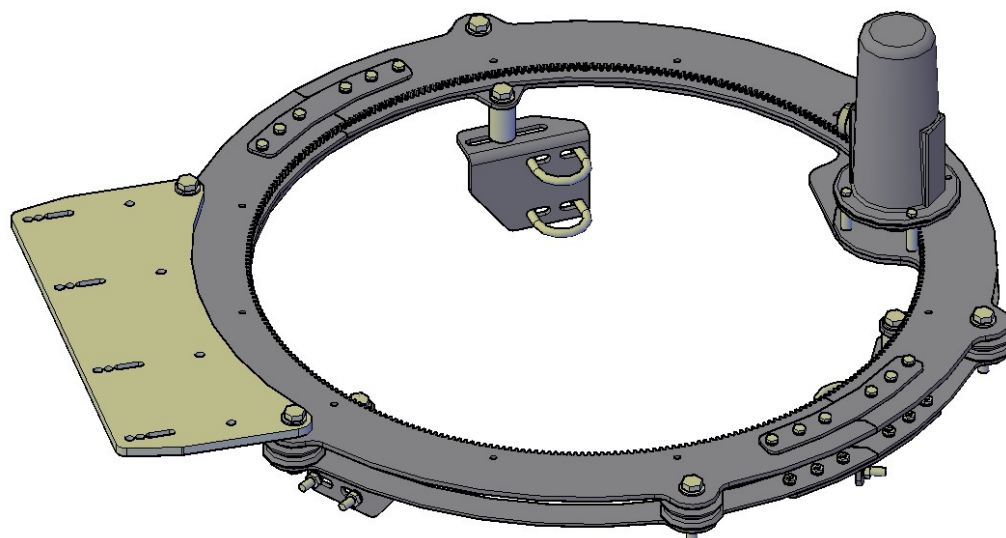
- M6x16mm bolts x 6 pcs
- Split washers $\varnothing 6\text{mm}$ x 6 pcs
- Nut M6 x 6 pcs



Pic. 5 – Complete assembling with antenna boom support.
Just release 2 wheel bolts, put up the boom support plate and fix it again by two longer provided M10x70mm bolts.



Pic. 6 – PST-RR55 assembled.



Pic. 7 – Controller.

